

GENERAL NOTES

ADJUST NUMBER, LOCATION, AND SPACING OF ALL SIGNS AND DEVICES TO FIT FIELD CONDITIONS AS APPROVED BY THE ENGINEER.

ALL DIRECTIONAL ARROWS SHALL HAVE AN ORANGE BACKGROUND.

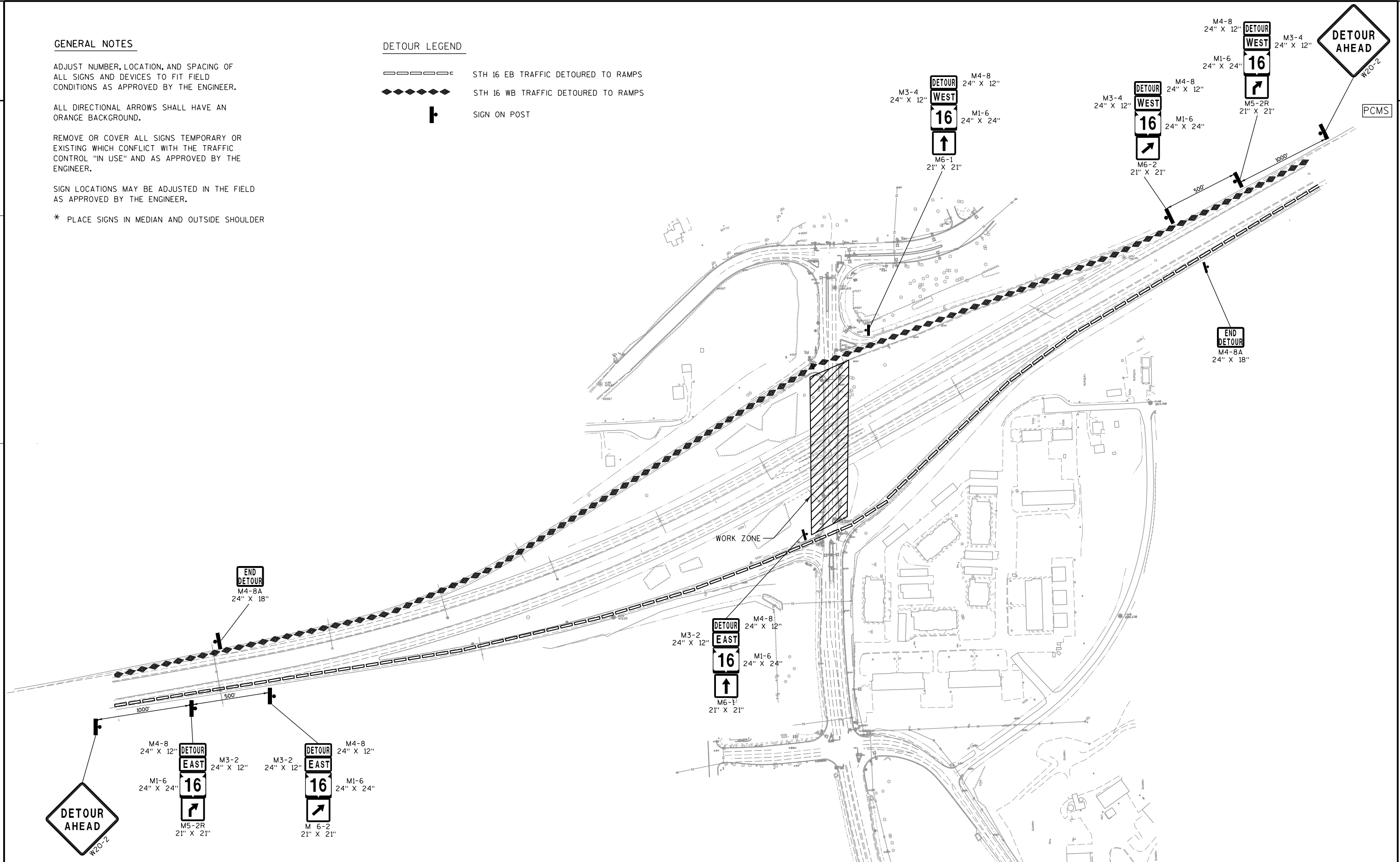
REMOVE OR COVER ALL SIGNS TEMPORARY OR EXISTING WHICH CONFLICT WITH THE TRAFFIC CONTROL "IN USE" AND AS APPROVED BY THE ENGINEER.

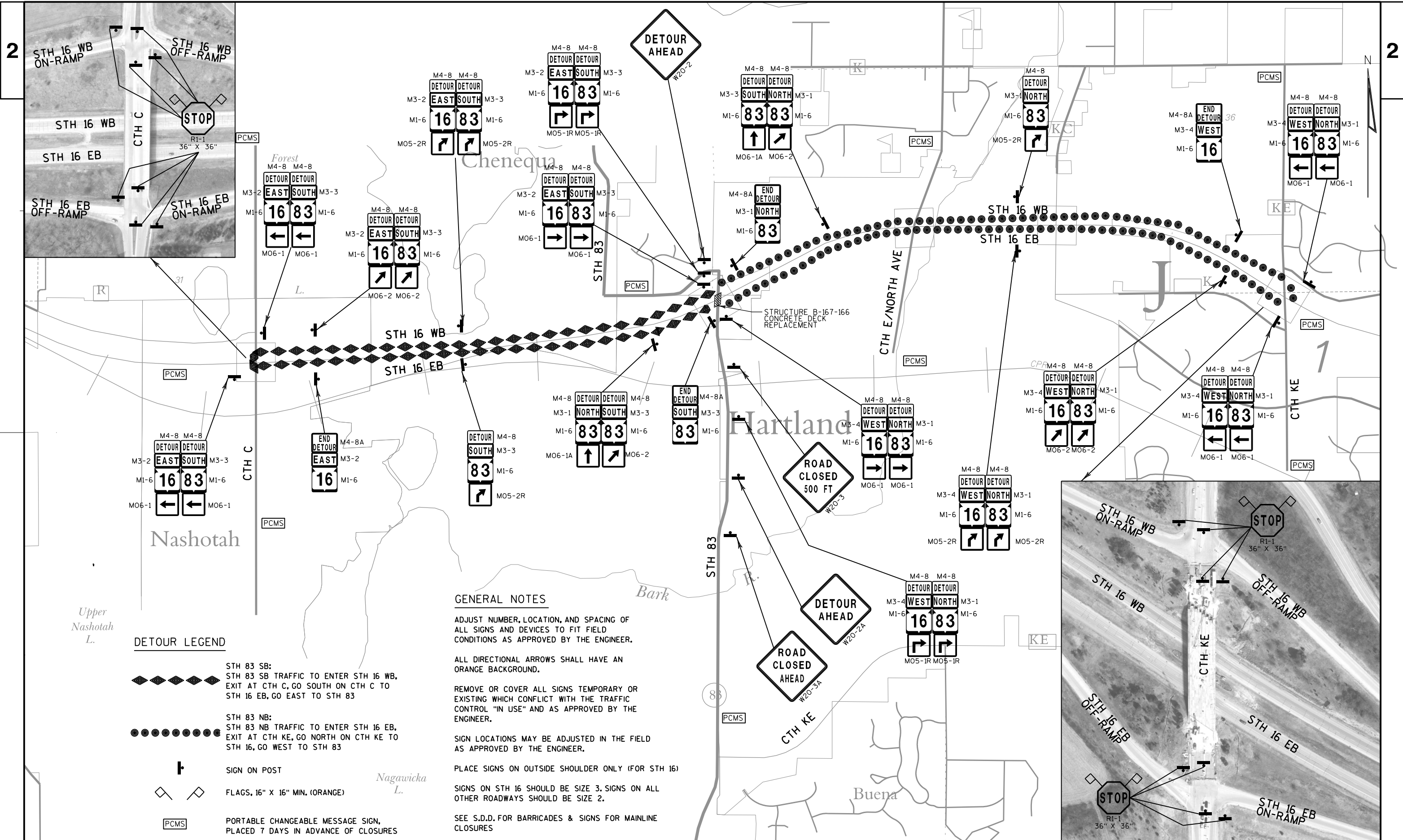
SIGN LOCATIONS MAY BE ADJUSTED IN THE FIELD AS APPROVED BY THE ENGINEER.

* PLACE SIGNS IN MEDIAN AND OUTSIDE SHOULDER

DETOUR LEGEND

- — — — — STH 16 EB TRAFFIC DETOURED TO RAMP
- ◆ ◆ ◆ ◆ ◆ STH 16 WB TRAFFIC DETOURED TO RAMP
- ┆ SIGN ON POST





GENERAL NOTES

ADJUST NUMBER, LOCATION, AND SPACING OF ALL SIGNS AND DEVICES TO FIT FIELD CONDITIONS AS APPROVED BY THE ENGINEER.

ALL DIRECTIONAL ARROWS SHALL HAVE AN ORANGE BACKGROUND.

REMOVE OR COVER ALL SIGNS TEMPORARY OR EXISTING WHICH CONFLICT WITH THE TRAFFIC CONTROL "IN USE" AND AS APPROVED BY THE ENGINEER.

SIGN LOCATIONS MAY BE ADJUSTED IN THE FIELD AS APPROVED BY THE ENGINEER.

PLACE SIGNS ON OUTSIDE SHOULDER ONLY (FOR STH 16)

SIGNS ON STH 16 SHOULD BE SIZE 3. SIGNS ON ALL OTHER ROADWAYS SHOULD BE SIZE 2.

SEE S.D.D. FOR BARRICADES & SIGNS FOR MAINLINE CLOSURES

DETOUR LEGEND

- STH 83 SB:
 STH 83 SB TRAFFIC TO ENTER STH 16 WB,
 EXIT AT CTH C, GO SOUTH ON CTH C TO
 STH 16 EB, GO EAST TO STH 83
- STH 83 NB:
 STH 83 NB TRAFFIC TO ENTER STH 16 EB,
 EXIT AT CTH KE, GO NORTH ON CTH KE TO
 STH 16, GO WEST TO STH 83
- SIGN ON POST
- FLAGS, 16" X 16" MIN. (ORANGE)
- PORTABLE CHANGEABLE MESSAGE SIGN,
 PLACED 7 DAYS IN ADVANCE OF CLOSURES