

**VILLAGE OF CHENEQUA**  
**Resolution No. 2019-12-09-02**

**RESOLUTION TO ESTABLISH WARD NO. 3 IN THE VILLAGE OF CHENEQUA**

WHEREAS, Section 5.15 of the Wisconsin Statutes provides the authority and procedures for establishing Wards; and

WHEREAS, the Village of Chenequa previously established Wards 1 and 2 in the Village of Chenequa pursuant to Section 5.15, and

WHEREAS, the boundaries of Ward 3 are shown on the attached annexation boundary map of the Village of Chenequa; and

WHEREAS, the polling place for Wards 1, 2 and 3 is the Chenequa Village Hall at 31275 W County Road K in the Village of Chenequa; and

WHEREAS, Ward 3 contains no persons.


NOW, THEREFORE, BE IT RESOLVED, that the Village of Chenequa finds that such ward boundaries are feasible and such ward boundaries are in conformity with the Wisconsin State Statutes.

BE IT THEREFORE RESOLVED, that the Village Board of the Village of Chenequa hereby approves such ward boundary lines pursuant to the provisions of Section 5.15 of the Wisconsin State Statutes.

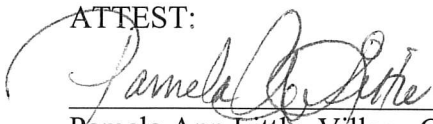
BE IT FURTHER RESOLVED, that Wards 1, 2 and 3 shall be combined for election purposes except during Spring Elections in even years when the contest for County Supervisory District is on the ballot.

Adopted this 9<sup>th</sup> day of December, 2019

VILLAGE OF CHENEQUA

BY:   
\_\_\_\_\_  
Jo Ann F Villavicencio  
Village President

ATTEST:

  
\_\_\_\_\_  
Pamela Ann Little, Village Clerk

Date Adopted: December 9, 2019

Date Posted: December 10, 2019

BEING A PART OF THE NW 1/4 OF THE SE 1/4 OF  
 SEC. 33, T.8N., R.18E.,  
 VILLAGE OF CHENEQUA, WAUKESHA COUNTY, WI

BRASS MCH. FND.  
 N 1/4 CORNER  
 SEC. 33-08-18

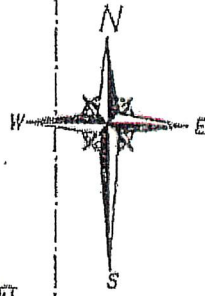
BRASS MCH. FND.  
 NE CORNER  
 SEC. 33-08-18

S.T.H. "K"

UNPLATTED LANDS  
 RASMUSSEN

UNPLATTED LANDS  
 RASMUSSEN

SCALE IN FEET  
 0 250 500



LOT 3 CSM 11880  
 DORNER

LOT 1 CSM 10720  
 DORNER

LOT 2 CSM 11880  
 DORNER

UNPLATTED LANDS  
 DORNER

CENTER OF SEC.  
 SEC. 33-08-18

SEE DETAIL

VILLAGE OF CHENEQUA  
 TOWN OF MERTON

NORTH LINE OF SE 1/4 SECTION 33-08-18  
 $S89^{\circ}43'40''W$  2646.95'

BRASS MCH. FND.  
 E 1/4 CORNER  
 SEC. 33-08-18

UNPLATTED LANDS  
 BENZ

UNPLATTED LANDS  
 SEIDEL

UNPLATTED LANDS  
 DORNER  
 MRT10417096

LOT 1 CSM 6405  
 DALUM

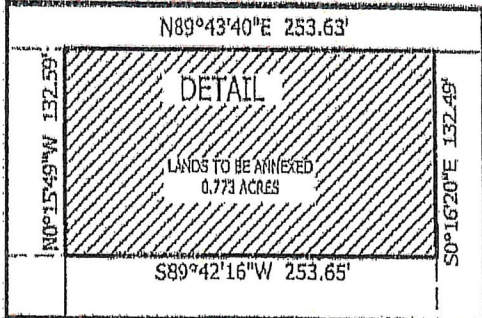
S.T.H. "83"

LOT 1 CSM 10717  
 WILKEY

VILLAGE OF CHENEQUA  
 TOWN OF MERTON

*Ward 3*

UNPLATTED LANDS  
 DORNER



PHONE: 414.949.8982  
 501 MAPLE AVENUE  
 DELAFIELD, WI 53018-9351  
 www.sehinc.com

SEH 501 MAPLE AVE., DELAFIELD, WI 53018 262-646-6855  
 PATH: Q:\AED\DORN\W14948519-SURVEY\92-CAD\10-C3\DORN\W\_149485\_ANNEXATION.DWG